

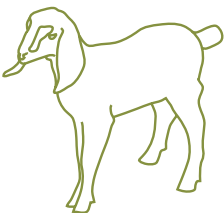
## COMMUNITY SUPPORTED AGRICULTURE FOR CHEESE LOVERS

Whether you are just learning about cheese or you are already a dedicated Yellow Springs Farm cheese enthusiast, we invite you to join us as a CSA member.

### WHAT IS A CSA?

A CSA is a relationship of mutual support and commitment between local farmers and community members who pay the farmer an annual membership fee to help cover production costs of the farm. In return, members receive a regular share of the production - for Yellow Springs Farm members, this is a share of local artisanal cheese.

A cheese CSA operates much like a vegetable or fruit CSA. As a CSA member you will enjoy regular deliveries of artisanal cheese while helping support diversity, sustainability, and small scale innovation in farming. Your food choices are helping shape the future of our food systems.



### WHAT DO YOU GET?

Yellow Springs Farm members will receive a cheese share two times per month, 13 pickups for 2012. Each assortment is usually 3 varieties of Yellow Springs Farm cheeses totaling 12 oz. PLUS Share includes 4 cheese portions totaling 16 oz. PLUS Share is perfect for split shares and larger households. NEW: Everything But Chevre includes 2 cheeses - 6 oz. each!

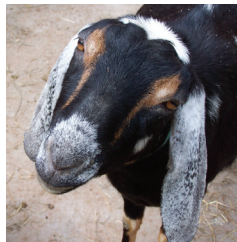
Both fresh pasteurized milk cheeses and aged raw milk cheeses are included. Members also have unique opportunities to try new products and place special orders for extra cheese. Some CSA cheeses are exclusive varieties only for members.

### CHEESE PICK UP

Cheese shares will be delivered every two weeks. Depending on your pick-up site, you will receive cheese either for first and third weeks, or second and fourth weeks of each month.



Always in Season™



Yellow Springs Farm proudly offers both fresh and aged Artisanal Goat Cheeses. The most important part of our award winning cheeses is the exceptionally good milk our goats produce. We breed and raise Nubian goats, with occasional genetic crosses, carefully selected for their naturally nutrient rich milk. Our herd browses pasture, cleans up invasive plant species in the woodland, and basks in the sun. Our goats also eat local hay and organic grains.

Al and Catherine Renzi make Yellow Springs Farm cheeses using age-old processes borrowed from both French and Italian traditions. Our original interpretation of these recipes, and inclusion of farm-raised herbs, nuts, and honey make many unique Yellow Springs Farm Goat Cheeses. Each small batch is handmade, and never includes preservatives or anything artificial. We use only vegetable rennet.

We offer both fresh, pasteurized milk cheeses, more. We love to select palette-pleasing trends to pair with local, fresh foods. There is always a new cheese to try. CSA members receive email newsletters with tasting and cheese pairing notes so that you can enjoy all the good flavors of Yellow Springs Farm.



1165 Yellow Springs Road  
Chester Springs, PA 19425  
610.827.2014  
www.yellowspringsfarm.com

## SIGN UP FOR 2012 YELLOW SPRINGS FARM GOAT CHEESE CSA

May - November 2012

One Subscription (13 cheese pickups)

- REGULAR SHARE (3 cheese portions)  
\$260 (cash or check); \$265 (credit card)\*
- EVERYTHING BUT CHEVRE (2-6 oz. portions)  
\$295 (cash or check); \$300 (credit card)\*
- PLUS SHARE (4 cheese portions)  
\$340 (cash or check); \$345 (credit card)\*

Name: \_\_\_\_\_

Address: \_\_\_\_\_

Phone: (\_\_\_\_) \_\_\_\_ - \_\_\_\_\_

Email \_\_\_\_\_

Preferred Pick Up Site:

- YSF (Tuesdays 12:30 -6:30 pm) Chester Springs
- Henry Got Crops (Host sites schedule times)  
Roxborough
- Taste of Olive, Ardmore
- Taste of Olive, West Chester
- 320 Market Café, Swarthmore
- Rushton Farm CSA, Malvern
- Maysies CSA, Glenmoore
- Charlestown CSA
- Lower Merion Conservancy, Gladwyne
- Victory Brewing Co, Downingtown
- Great Harvest Bread, Wayne
- Fair Food-Reading Terminal, Philadelphia
- Other: \_\_\_\_\_

Method of Payment:

- Check
- Visa
- Master Card

Credit Card Number: \_\_\_\_\_

Expiration Date: \_\_\_/\_\_\_/\_\_\_

Billing Address: \_\_\_\_\_

Security Code: \_\_\_\_\_

\* Cheese share membership is non-refundable after season begins. Cancellations before May 1, 2012 will be charged a \$60 service fee.

**Renewals processed in order received until all shares are sold.**

